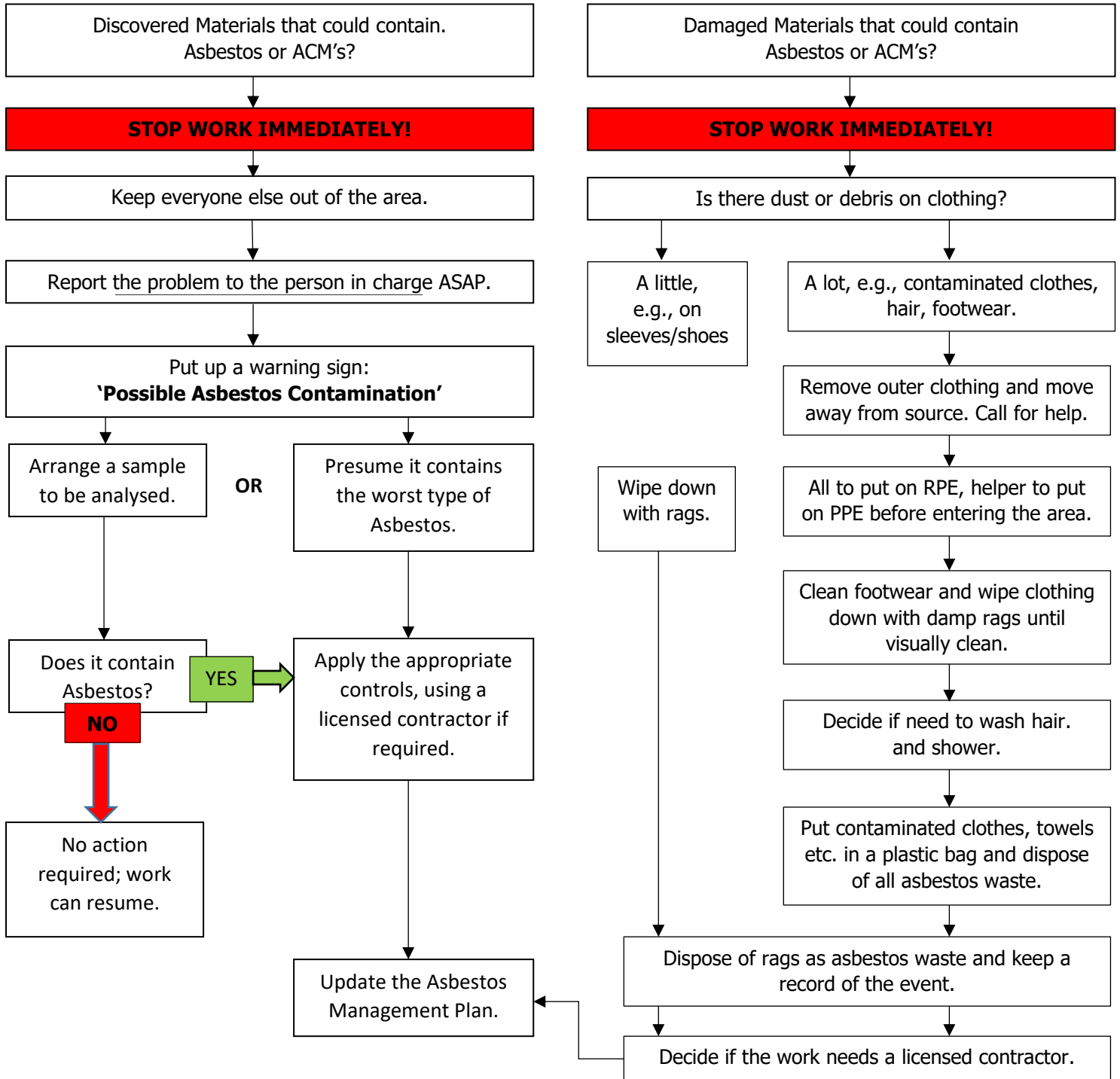


Policy:	Discovery of Asbestos Flow Chart	Reference:	DAFSES0006
		Review Date:	01/2023





Emergency Procedures.

Steps should be taken to:

- Warn anybody who may be affected.
- Exclude anyone from the area not needed to deal with the release.
- Identify the cause of the uncontrolled release.
- Regain adequate control as soon as possible.
- Make sure anyone in the work area affected who is not wearing PPE or RPE leaves the affected immediately. Minimise the spread of asbestos by ensuring they are suitably decontaminated.
- Clean up dust and debris.
- Decontaminate anyone who is contaminated with dust and debris.
- Ensure rags clothing or PPE is decontaminated or disposed of as contaminated waste. Consider lone and/or remote workers to ensure they can alert someone if necessary.